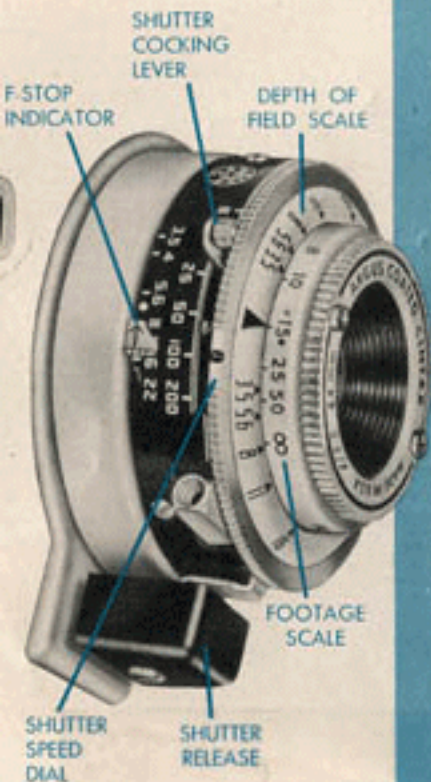


Taking pictures is a pleasure
WITH YOUR NEW argus a-four

This is your Argus **A-FOUR LENS**



Critically sharp and fully color-corrected, this 44mm. f:3.5 Argus Cintar lens is one of the finest made in America. The lens openings, or f-stops control the amount of light that passes through the lens while the shutter is open. The smallest lens opening, f:22, lets through the least light. Each succeeding setting doubles the amount of light passing through. For example, f:11 lets through twice as much light as f:16. Indicator shows diaphragm set at f:8 in illustration at left.

The exposure tables found on pages 12 and 13 will help you select the proper f-stop for the most standard types of subjects.

This is your Argus

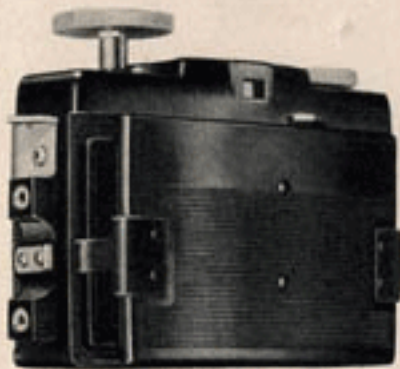
A-FOUR SHUTTER

The precision-made shutter on your new Argus A-Four has four speeds (1/25, 1/50, 1/100, and 1/200 second) and a "B" setting for time exposures. Shutter speeds control the length of time that the shutter stays open to admit light to the film. Set speed by turning shutter speed dial so that indicator mark is opposite desired speed. It is set at 1/100 in this illustration.

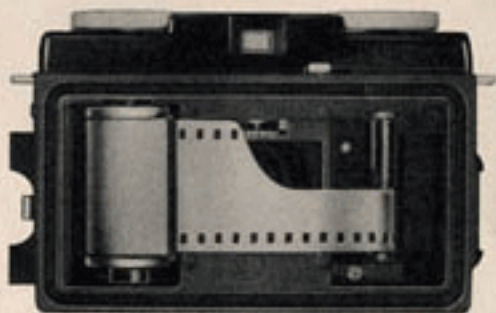
The exposure tables found on pages 12 and 13 will help you select the proper shutter speeds and f-stop for your subjects.



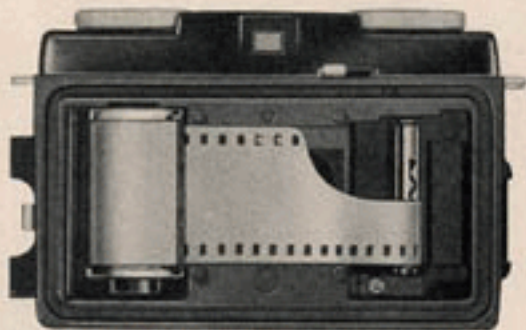
How to load your Argus A-Four



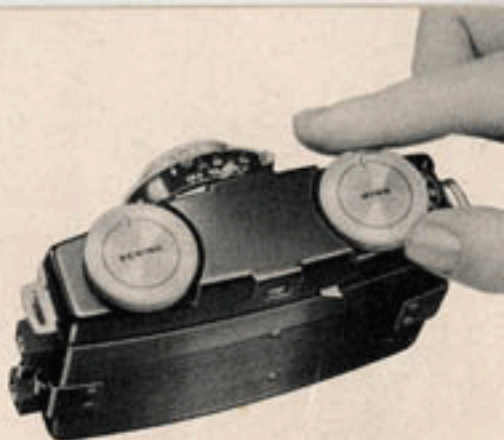
1 Pull Rewind Knob up as far as it will go. Lift up Cover Latch with thumb or first finger. Remove the back by lifting it off the camera.



2 Place 35mm. cartridge in camera. Push down Rewind Knob, turning if necessary. Turn Winding Knob until the recessed side of zig-zag slot appears. Thread film leader into take-up spindle. Zig-zag slot in spindle prevents film from slipping.



- 3** Turn Winding Knob until perforations in film engage sprocket. (Press Rewind Lever if necessary.) Film will automatically secure itself to take-up spindle. Replace back by engaging the open hinge with the hinge post on side of camera. Then press down on Cover Latch until it snaps closed, making sure it is properly seated.



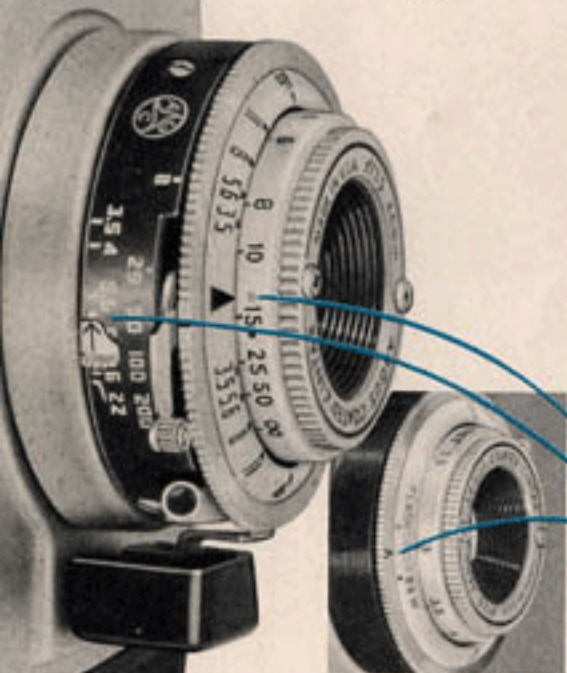
- 4** Take up film leader by turning Winding Knob in direction of arrow until it stops. Press Rewind Lever on the back of the camera and turn Wind Knob 1/3 TURN ONLY. Release Rewind Lever and continue turning until it stops. Repeat operation. Set Counter by turning the dial *in the direction of the arrow*. Turn to red 20 or red 36, according to number of exposures in cartridge.

Taking Pictures EASY AS 1-2-3

There are only three quick settings needed to take fine pictures with your Argus A-Four—

1. LENS OPENING OR *f*-STOP
2. DISTANCE SETTING
3. SHUTTER SPEED

Your A-Four has COLOR-MATIC settings for your convenience in making quick adjustments for all average scenes in bright sunlight. Each of these *three settings* is shown in colored markings.



BOTTOM VIEW

COLOR FILM

SET ALL THREE ADJUSTMENTS ON YELLOW when using color film (Kodachrome or Ansco Color).

Cock shutter by pushing up Shutter Cocking Lever until lever arm is exposed. This motion is counter clockwise. You are now ready to make your picture.

with COLOR-MATIC SETTINGS

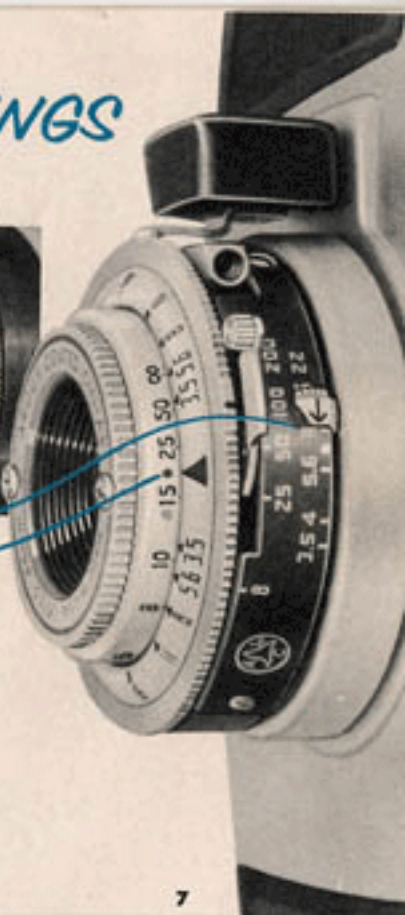
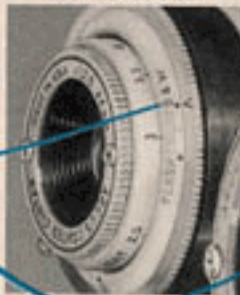
BLACK and WHITE

SET ALL THREE ADJUSTMENTS ON RED when using black and white film (*Plus X or Ansco Supreme*).

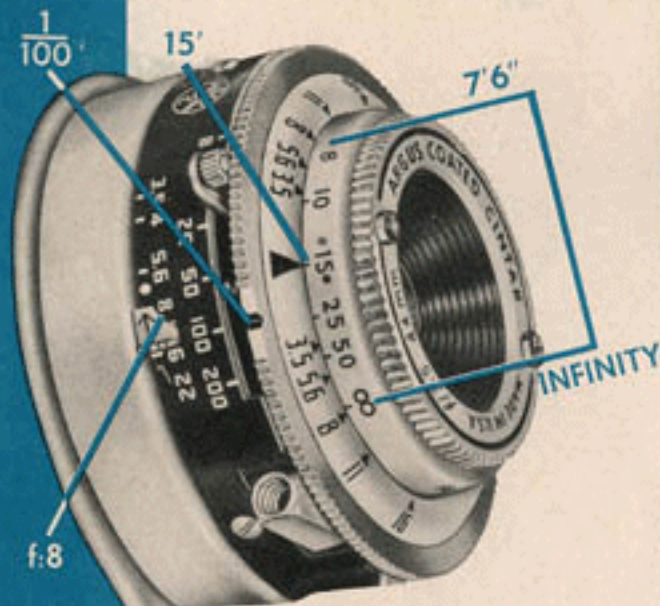
Cock shutter by pushing up Shutter Cocking Lever until lever arm is exposed. This motion is counter clockwise. You are now ready to make your picture.

As you become more familiar with your Argus A-Four, you may want to photograph varied subjects under many different lighting conditions, indoors and out. The versatile Argus A-Four has complete range of lens openings, shutter speeds, and distance settings. You will find complete exposure information on pages 12 and 13.

BOTTOM VIEW



Depth of Field



The depth of field scale, which is located on the outside of your new Argus A-Four lens barrel, is used to indicate the range of sharpness for each lens opening. For example, with your A-Four focused on 15 feet, and your lens at f:8, all subjects between 7'6" and infinity will appear sharp.

CORRECT METHOD OF HANDLING YOUR ARGUS A-FOUR

For clear, sharp pictures, center eye behind eyepiece. Move both head and camera simultaneously to center picture.

To make your picture, hold camera as shown in illustrations. Notice position of finger on Shutter Release. Make picture by depressing Shutter Release slowly in a smooth, firm motion.

To take another picture, turn Winding Knob until it stops. Then, cock the shutter and take your next picture.



HORIZONTAL (WIDE)
PICTURES



VERTICAL (LONG)
PICTURES

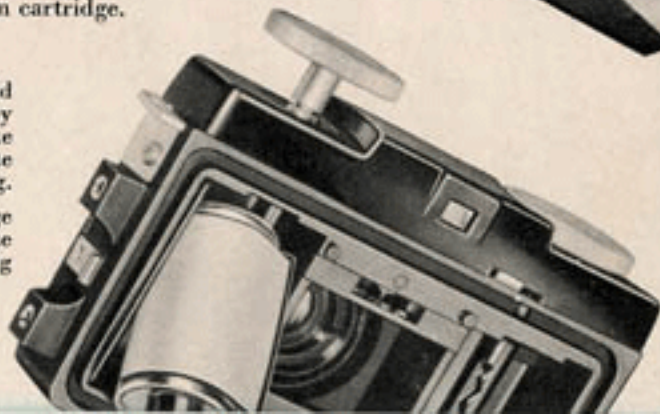
To double-expose intentionally, trip Rewind Lever instead of winding film; then cock the shutter and take your second picture. Since the counter dial records both exposures be sure to move it back one setting.

Unloading your Argus A-Four

- 1 First check Exposure Counter. When it reads "0" your film has been completely exposed.
- 2 Hold Rewind Lever down and turn Rewind Knob in direction of arrow until Winding Knob stops turning. One or two extra full turns will insure complete film return into cartridge. Rewind Lever is depressed during entire rewind cycle.
- 3 Open camera, as previously instructed. Pull up Rewind Knob and remove film cartridge.

NOTE: Removed cartridge, if color, should be mailed for processing as directed by instruction sheet accompanying film. Take black-and-white film to your favorite camera dealer for developing and printing.

Load your camera with another cartridge to be ready for those many "immediate action" picture opportunities. (See loading instructions, pages 4 and 5).



How to take **FLASH** pictures



1. Unscrew the bottom cap of the flash gun and install two size C photo-flash batteries. Be sure batteries are fresh.



2. To attach flash gun to your A-Four, simply plug into the side of the camera. Your A-Four has built-in synchronization. Caution: Do not have a flash bulb in the gun when attaching.



3. After attaching flash gun to your A-Four, insert flash bulb pushing in as far as it will go. Follow the instructions on page 12 and the flash bulb package for exposure data.

The flash bulb is ejected automatically by pressing the red button at the top of the flash gun. This prevents burned fingers.

FLASH EXPOSURE GUIDE FOR **Black and White** and **COLOR**

The following guide numbers are recommended when taking flash pictures. Divide the distance in feet from lamp to subject matter into the guide number to determine the f-stop.

Flash exposures should always be made at 1/25 shutter speed. This setting is marked FLASH in green on the bottom of the lens barrel.

EXAMPLE: Using wire-filled flash bulbs such as

No. 5, 25, with guide number of 90, shutter set at 1/25 second, flash lamp 10 feet from subject, the f-stop would be f:9—90 divided by 10 equals 9. Set between f:8 and f:11.

The A-four camera is designed with all types of flash synchronization: FAST (gas-filled bulbs, SM or SF), MEDIUM (wire-filled bulbs, No. 5, 25, and Bantam 8) and "X" DELAY (for electronic flash equipment).

FILM	SM, SF, and BANTAM 8 BULBS	No. 5, 25 BULBS	BLUE BULBS No. 5B-25B
Kodachrome Type A Ansoco Tungsten	44	90*	—
Kodachrome Daylight Ansoco-Color Daylight	—	—	55
Plus-X Ansoco Supreme	80	150	—
Super-XX Ansoco Ultra-Speed	110	210	—

*When using color film with flash it is suggested filters be used as follows: Ansoco Color Tungsten—UV-16, Kodachrome Type A—81D or equivalent. Ansoco or Kodachrome may be used without a filter when SM or SF flash lamps are employed.

OUTDOOR EXPOSURE GUIDE

Black and White

Use a shutter speed of 1/50 second for f-stops listed below when using Plus X—Anso Supreme film (50-32). Use a shutter speed of 1/100 second for f-stops listed below when using Super XX—Anso Ultra-Speed (100-64) or other film with equivalent speeds.

LIGHT CONDITION	BRIGHT	HAZY	CLOUDY	DULL
Bright subjects	f16	f11	f8	f5.6
Average subjects	f11	f8	f5.6	f4
Shaded subjects	f8	f5.6	f4	f3.5

OUTDOOR EXPOSURE GUIDE

Kodachrome or Anso Color

LIGHT CONDITION	BRIGHT SUN	HAZY	OPEN SHADE
Light colored subjects	f8	f5.6	f4
Average subjects	f5.6 to f8	f4 to f5.6	f3.5 to f4
Dark colored subjects	f5.6	f4	f3.5

Above exposures based on 1/50 shutter speed.

For complete information on various types of film, flash bulbs, and filters, consult manufacturers' instructions.

Good Hints for Good Pictures

1

EXPOSURE—This is much more important with color than when making black-and-white pictures. Follow, carefully, the instructions that accompany each roll of film, or use a good exposure meter.

2

LIGHTING—Be sure your lighting is even. Both your subject and the background should be entirely in the sun, or entirely in the shade. For beginners full face lightings of the "snap-shot" variety are easiest. You will have best results with your camera facing *away* from the sun, the subject and background facing *into* the sun.

3

WEATHER CONDITIONS—For best color results, confine your photography to the hours between 9 A.M. and 4 P.M. in summer and 10 A.M. and 3 P.M. in winter, except when special effects such as sunrise or sunset are desired. Color pictures made earlier or later in the day tend to have a reddish tint due to the quality of the sunlight. Black and white may be taken at any time during the day with sufficient light.



● Keep your principal interest in the center of the picture. If you're photographing action, catch it moving into the picture, not out.

● Keep an eye on what's behind the subject you shoot. Usually, the sky will afford you your most convenient and most pleasing background.

● Keep horizon lines below the middle of the picture whether you hold the camera either horizontally or vertically. This gives your pictures much more strength and interest.

● Keep your camera busy. In photography, you learn best by doing. It's so easy in this hobby to transform a failure into a success,

FEATURES of the Argus A-Four

TECHNICAL AND MECHANICAL

<p>FILM SIZE 35mm Frame Approx. 1" x 1$\frac{13}{16}$"</p> <p>LENS Speed f:3.5 Coated Cintar Focal length 44mm</p> <p>SHUTTER Speeds B, 25, 50, 100, 200 Cocked manually Body release</p> <p>F-STOPS 3.5, 4, 5.6, 8, 11, 16, 22</p> <p>COUNTER 20-36 exposures marked in red Automatic counting coupled with Winding Knob Set in direction of arrows</p> <p>FOCUSING 2$\frac{1}{2}$' to infinity as indicated on lens barrel</p> <p>DEPTH OF FIELD SCALE Marked on Lens barrel</p> <p>FILTER SIZE Series V 1$\frac{13}{16}$ adapter, slip on</p>	<p>FLASH Plug-in type Built-in synchronization Size "C" photoflash batteries SM, SF and wire-filled bulbs at 1/25 second marked in green.</p> <p>DOUBLE AND SKIP EXPOSURE PREVENTION Interlocked mechanism of Shutter, Lens, and Winding Knob—all three must be set. Rewind Lever releases all three</p> <p>FULL FIELD COVERAGE 52$\frac{1}{2}$°</p> <p>ANGLE AND COVERAGE 31° x 45°</p> <p>HYPERFOCAL DISTANCE 35'9" at f:3.5</p>
--	--

Accessories for your Argus A-Four



Genuine Leather Carrying case to protect your camera from weather, hard knocks, and dust.



Your Argus Dealer can supply you with a standard cable release to fit your A-Four. When using a cable release, the Rewind Lever must be depressed for one-third cycle of each winding.

Easy to use Argus 76 Flash unit plugs right into your A-Four. No dangling wires, nothing to adjust.

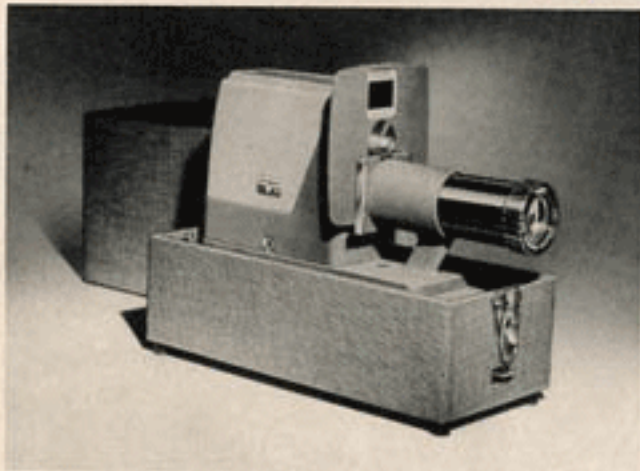


The threaded bushing on the base of your Argus A-Four permits the use of any standard tripod. It is a useful accessory for time exposures. Your Argus Dealer has them in stock.



Best way to view your color slides

ARGUS 300 WATT BLOWER-COOLED PROJECTOR

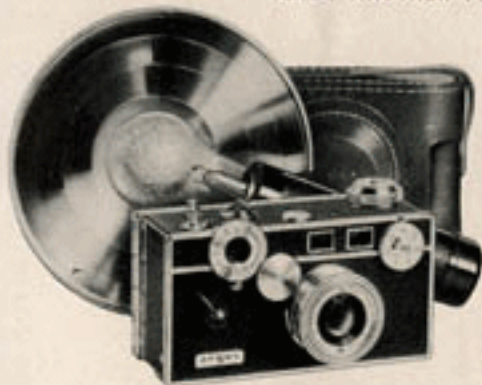


It's America's favorite way to look at color slides. Easy to use—you'll see your highly-prized slides in true, brilliant color. An exclusive "right-side-up" rotary slide carrier prevents upside-down pictures. Silent power blower and special heat-absorbing lens protect your valuable slides—always. It's the perfect companion for any 35mm camera. The finest projector in its price class.

HERE'S ANOTHER FINE ARGUS 35MM CAMERA

ARGUS C3

It's the world's most popular 35mm camera—more than a million in use. Has Cintar f:3.5 color-corrected lens; lens-coupled rangefinder; precision shutter with speeds up to 1/300 second; gear-controlled built-in synchronizer—the flash gun plugs right into the camera. Ideal for action, flash and gorgeous color. Interchangeable lenses give the C-3 the versatility of cameras costing hundred of dollars.



AMERICA'S MOST DISTINGUISHED
35MM CAMERA!

ARGUS C4

With a truly great lens—the Argus Cintar f:2.8. Lens-coupled rangefinder combined with large viewfinder; superaccurate shutter . . . 1/10 to 1/300 second—perfect complement to the critically sharp lens; built-in flash synchronizer; film wind coupled to shutter to prevent double exposure.



Guarantee

Your Argus A-Four camera was thoroughly inspected and tested before it was shipped from our factory, and when purchased from an Authorized Argus Dealer, it is fully guaranteed for a period of one year against defects in workmanship or material.

If this camera develops defects in material or workmanship it will be repaired or replaced (our option) without charge.

This guarantee is void in the event the camera has been damaged through accident, misuse, mishandling or for reasons beyond our control.

IMPORTANT

Authorized Argus Dealers sell new Argus equipment at full list price; used or rebuilt equipment sold at less than list price is not guaranteed by the factory.

ARGUS CAMERAS, INC., ANN ARBOR, MICHIGAN